

EH1036

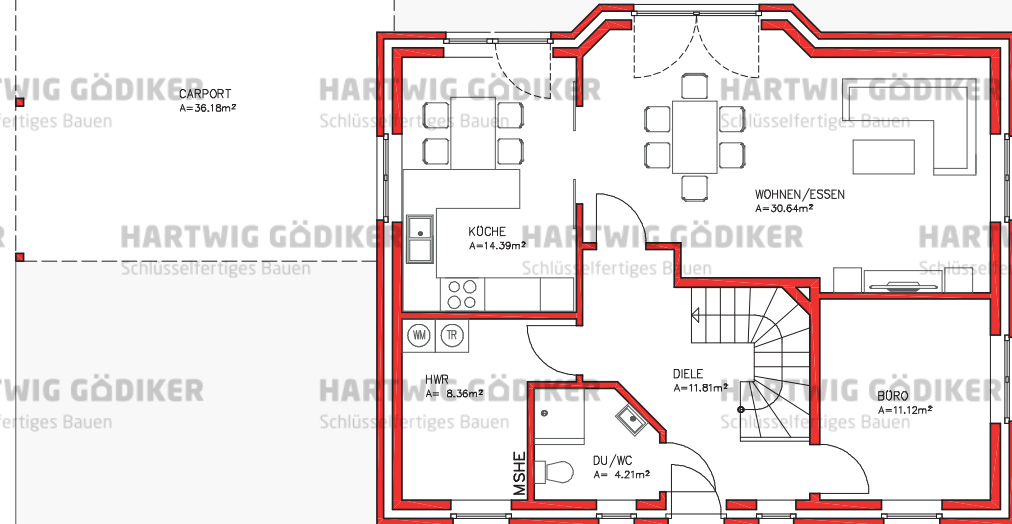
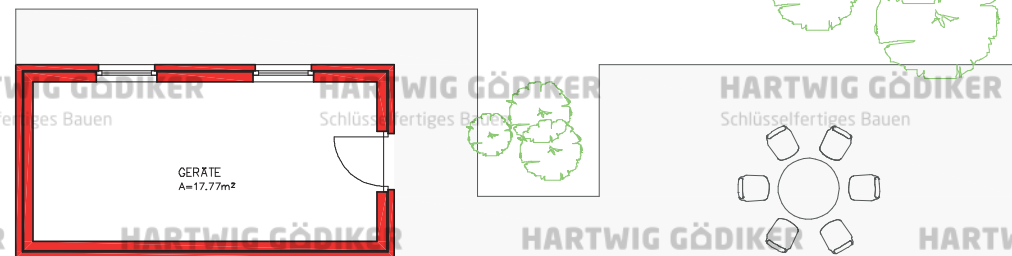
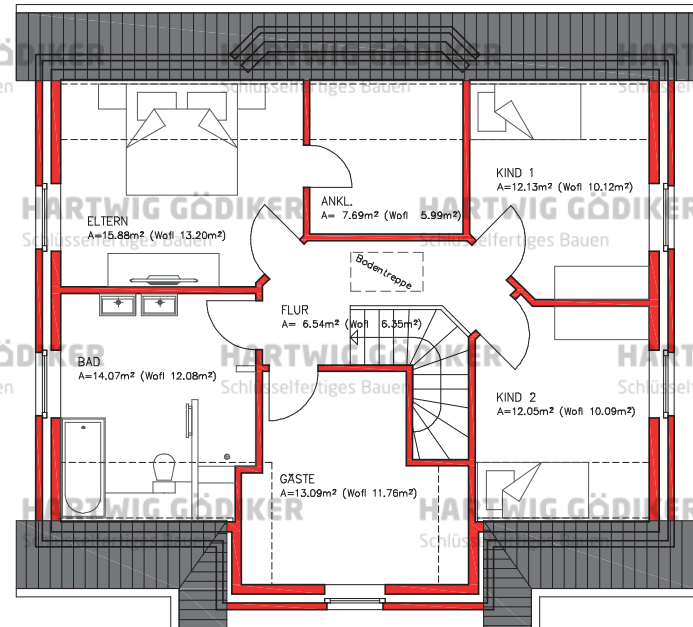
# EINFAMILIENHAUS

WOHNFLÄCHE: 150,05 m<sup>2</sup>

EG: 80,46 m<sup>2</sup> | DG: 69,59 m<sup>2</sup>



HARTWIG GÖDIKER  
Schlüsselfertiges Bauen



HARTWIG GÖDIKER  
Schlüsselfertiges Bauen

HARTWIG GÖDIKER  
Schlüsselfertiges Bauen

HARTWIG GÖDIKER  
Schlüsselfertiges Bauen

HARTWIG GÖDIKER  
Schlüsselfertiges Bauen

HARTWIG GÖDIKER  
Schlüsselfertiges Bauen

HARTWIG GÖDIKER  
Schlüsselfertiges Bauen